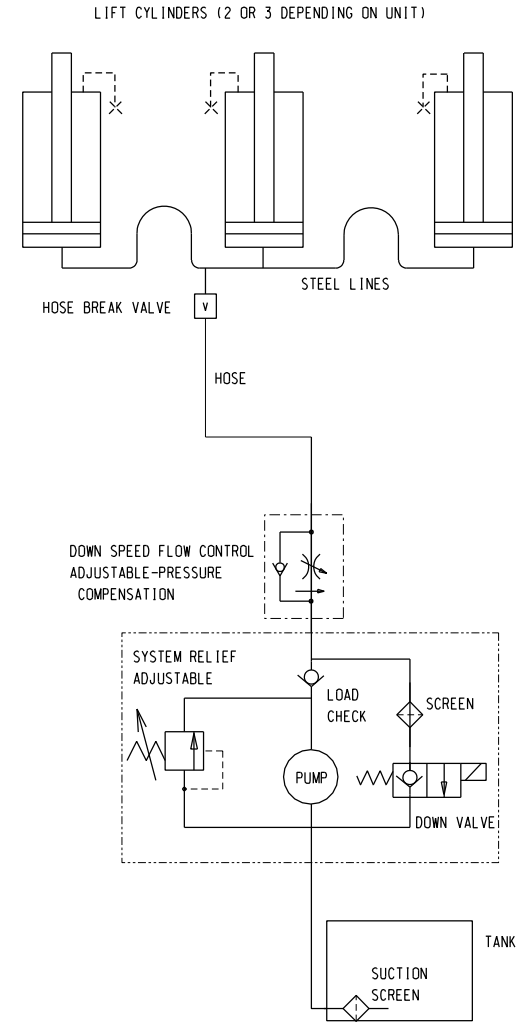
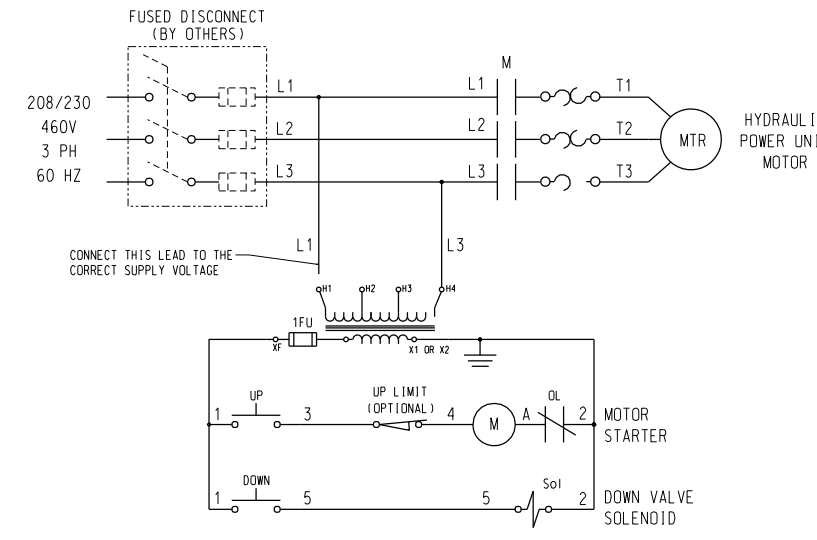


REV	REVISION HISTORY - DESCRIPTION	DATE	APPROVED	MF NO.
A	MOVED BOLLARDS AND UPDATED NOTE: CORRECTED CYLINDER VENT SCHEMATIC	01-19-12	SMS	
B	ADDED ALUMINUM BRIDGE PLATE CLEARANCE NOTE	04-03-12	SMS	
C	UPDATED BRIDGE DIMENSIONS FOR CLARITY: ADDED HINGE GROUT AND NOTE: ADDED DIAGONAL TOLERANCE FOR SQUARENESS	02-21-13	SMS	

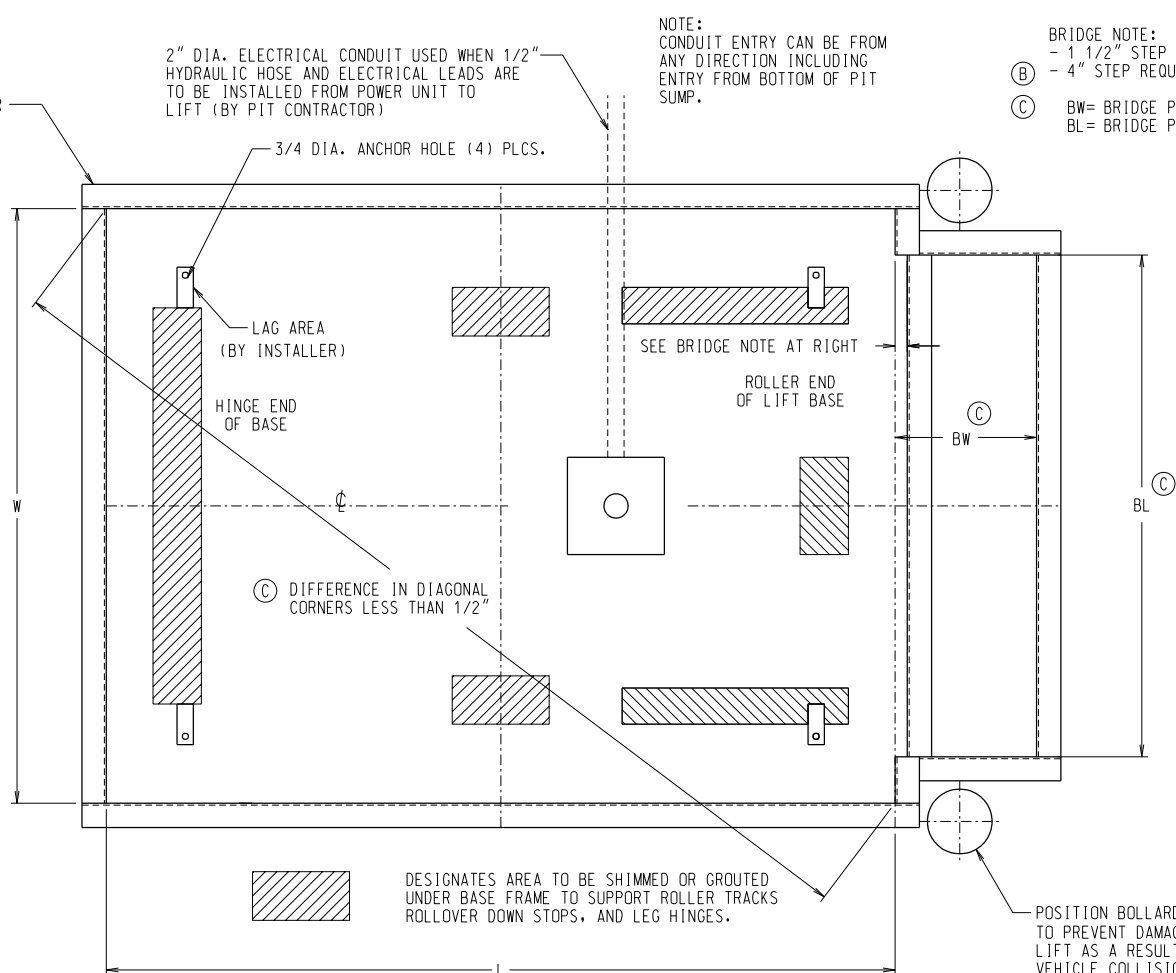
HYDRAULIC DIAGRAM



WIRING DIAGRAM

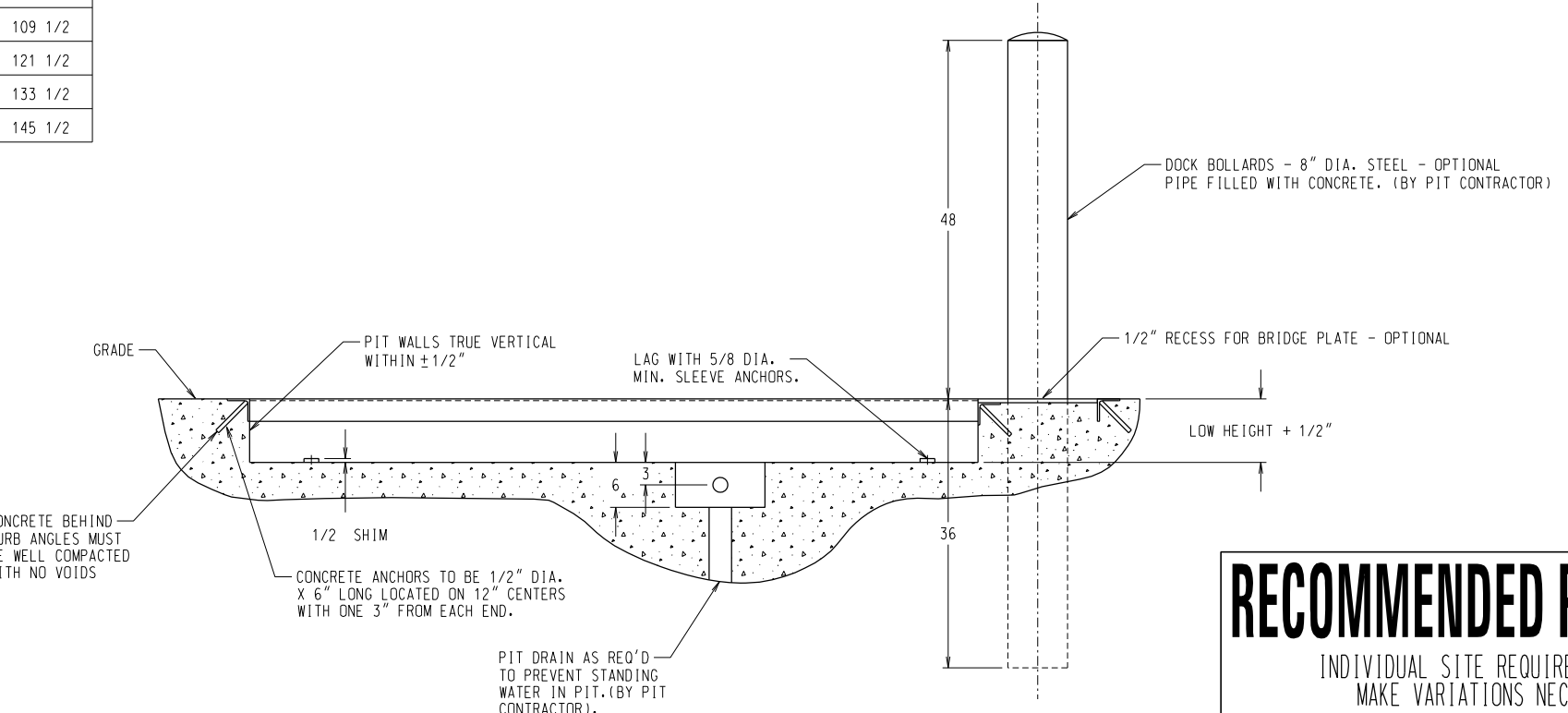


NOTE: UPPER TRAVEL LIMIT SWITCH IS OPTIONAL. IF LIMIT SWITCH IS ABSENT, MOVE WIRE 4 IN PANEL FROM TERMINAL 4 TO TERMINAL 3 AND RENUMBER AS WIRE 3.



DOCK LIFT PLATFORM CHART FOR PIT PLAN

PLATFORM SIZE (FT)	W (INCHES)	L (INCHES)
6' X 8'	73 1/2	97 1/2
6' X 9'	73 1/2	109 1/2
6' X 10'	73 1/2	121 1/2
6' X 11'	73 1/2	133 1/2
6' X 12'	73 1/2	145 1/2
7' X 8'	85 1/2	97 1/2
7' X 9'	85 1/2	109 1/2
7' X 10'	85 1/2	121 1/2
7' X 11'	85 1/2	133 1/2
7' X 12'	85 1/2	145 1/2
8' X 8'	97 1/2	97 1/2
8' X 9'	97 1/2	109 1/2
8' X 10'	97 1/2	121 1/2
8' X 11'	97 1/2	133 1/2
8' X 12'	97 1/2	145 1/2



RECOMMENDED PIT PLAN
INDIVIDUAL SITE REQUIREMENTS MAY MAKE VARIATIONS NECESSARY

THIS DRAWING MUST BE AT REVISION: 'C'

GENERAL NOTES:

- LIFT SHIPS WITH REMOVABLE LIFTING EYES INSTALLED.
- HYDRAULIC CONNECTION HOSE FROM LIFT TO POWER UNIT IS NOT INCLUDED UNLESS SPECIFIED.
- POWER UNIT BASIC DIMENSIONS - 23" L X 6" W X 14 3/4" H.
- HYDRAULIC FLUID INCLUDED AND SUPPLIED BY SOUTHWORTH.
- ELECTRICAL CONTROL PANEL IS PREWIRED AND MOUNTED TO POWER UNIT.
- HAND HELD PUSHBUTTON SUPPLIED WITH 20 FT COIL CORD PREWIRED TO CONTROL PANEL.

ITEM	QTY	DESCRIPTION PARTS LIST	PART NO.
SOUTHWORTH			
REFERENCE 60034744		CAGE CODE 06328	SCALE 1/12
DDL5-59M		TI PIT PLAN DDL5-59M BS E	
MODEL		TITLE	
D		60036949	C
SIZE		DNG NO: SHEET 1 OF 1	