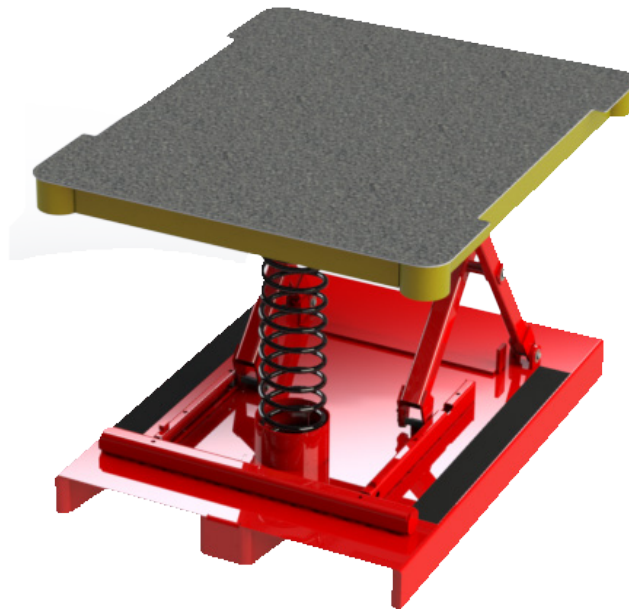


# SOUTHWORTH

## PalletPal Walkie Owner's Manual



Model: \_\_\_\_\_  
Serial Number: \_\_\_\_\_  
Date placed in  
service: \_\_\_\_\_

SOUTHWORTH PRODUCTS CORP.  
P.O. Box 1380, Portland, ME 04104-1380  
Telephone: 800-743-1000 • 207-878-0700  
Fax: 207-797-4734  
[www.SouthworthProducts.com](http://www.SouthworthProducts.com)

# Contents

|          |  |           |
|----------|--|-----------|
| <b>1</b> | <b>Introduction.....</b>                       | <b>4</b>  |
| 1.1      | Responsibilities of Owner and Users.....       | 4         |
| 1.2      | Responsibilities of Operators.....             | 5         |
| <b>2</b> | <b>Safety.....</b>                             | <b>7</b>  |
| 2.1      | Safety Alert Symbols.....                      | 7         |
| 2.2      | Signal Words.....                              | 7         |
| <b>3</b> | <b>Labeling.....</b>                           | <b>8</b>  |
| 3.1      | Label Placement Diagram.....                   | 8         |
| <b>4</b> | <b>Setup.....</b>                              | <b>9</b>  |
| <b>5</b> | <b>Operation.....</b>                          | <b>10</b> |
| 5.1      | Application & Use.....                         | 10        |
| 5.2      | Loading & Unloading.....                       | 10        |
| <b>6</b> | <b>Maintenance &amp; Repair.....</b>           | <b>11</b> |
| 6.1      | Periodic Maintenance.....                      | 11        |
| 6.1.1    | Weekly.....                                    | 11        |
| 6.1.2    | Every Six Months.....                          | 11        |
| <b>7</b> | <b>Troubleshooting.....</b>                    | <b>12</b> |
| <b>8</b> | <b>Warranty &amp; Contact Information.....</b> | <b>13</b> |

|  |
|--|
|  <b>WARNING</b>   |
| Cancer and Reproductive Harm -<br><a href="http://www.P65Warnings.ca.gov">www.P65Warnings.ca.gov</a> |

This label (part # 10095524) is required by California Law. For more information visit:

[www.P65Warnings.ca.gov](http://www.P65Warnings.ca.gov)

## 1. Introduction

The PalletPal Walkie is a passive spring actuated level loader making loading pallets faster, safer, and easier. This simple, automatic, load leveler uses a calibrated spring to lower the load as cases, boxes or cartons are added. No power supply is required. No modifications or special attachments are required, it fits all standard electric walkies and walkie riders.

The Walkie can support up to 4,500 lb. pallet loads and maintain an ergonomic working height for loads between 400-2,200 lb. The Walkie can support all types and sizes of skids and pallets, including GEO and half pallets.

### 1.1 Responsibilities of Owner and Users

**Basic Principles** - Owners/users shall apply sound principles of safety, training, inspection, maintenance, and expected operating environment. It shall be the responsibility of the owner/user to advise the manufacturer where deflection may be critical to the application.

**Manuals** - Owners/users shall keep and maintain a copy of the operating and maintenance manual(s) and ensure its availability to operating and maintenance personnel.

**Inspection and Maintenance** - It shall be the responsibility of the users to inspect and maintain the machine as required to ensure proper operation. The frequency of inspection and maintenance shall be based upon the manufacturer's recommendations and be compatible with operating conditions and the severity of the operating environment. Machinery that is not in proper operating condition shall be immediately removed from service until repaired. Maintenance and repairs shall be made by a qualified person and the repairs shall be in conformance with the manufacturer's recommendations.

**Maintenance Safety Precautions** - Before adjustments and repairs are started on the machine, the following precautions shall be taken as applicable:

1. Remove the load from the platform.
2. Follow precautions and directions as specified by the manufacturer.

**Replacement Parts** - When parts or components are replaced, they shall be replaced with parts or components approved by the original manufacturer.

**Maintenance Training** - The user shall ensure only qualified personnel inspect and maintain the machine in accordance with the manufacturers recommendations.

**Operator Training** - An owner/user, who directs or authorizes an individual to operate the machine shall ensure that the individual has been:

1. Trained in accordance with the manufacturer's operating manual.
2. Made aware of the responsibilities of operators as outlined in section 1.4 of this manual.
3. Retrained, if necessary, based on the owners/user's observation and evaluation of the operator.

**Modifications** - Modifications and additions shall not be performed without the manufacturer's prior written approval. Where such authorization is granted, capacity, operation, and maintenance instruction plates, tags, or decals shall be changed accordingly.

## 1.2 Responsibilities of Operators

**Basic Principles** - Operators shall apply sound principles of safety and good judgment in the application and operation of the machine with consideration given to its intended use and expected operating environment. Since the operator is in direct control of the machine, conformance with good safety practices is the responsibility of the operator. The operator shall make decisions on the use and operation with due consideration for the fact that his or her own safety as well as the safety of other personnel on or near the machine is dependent on those decisions.

**General Training** - Only personnel who have received general instructions regarding the inspection, application and operation of machine, including recognition and avoidance of hazards associated with their operation, shall operate the machine. Such topics covered shall include, but not necessarily be limited to, the following issues and requirements:

1. A pre-start inspection
2. Responsibilities associated with problems or malfunctions affecting the operation of the machine.
3. Factors affecting stability
4. The purpose of placards and decals
5. Workplace inspection
6. Safety rules and regulations
7. Authorization to operate
8. Operator warnings and instructions
9. Actual operation of the machine. Under the direction of a qualified person, the trainee shall operate the machine for a sufficient period of time to demonstrate proficiency in actual operation of the machine.

**Pre-start Inspection** - Before use each day or at the beginning of each shift, the machine shall be given a visual inspection and functional test including but not limited to the following:

1. Safety devices (if applicable)
2. Loose or missing parts
3. Nameplates, precautionary and instructional markings and/or labeling
4. Guarding system (if applicable)
5. Items specified by the manufacturer

**Problem or Malfunctions** - Any problems or malfunctions that affect the safety of operations shall be repaired prior to the use of the machine.

**Before Operations** - The operator shall:

1. Read and understand the manufacturer's operating instruction(s) and user's safety rules or have them explained
2. Understand all labels, warnings, and instructions displayed on the machine or have them explained.

**Workplace Inspections** - Before the machine is used and during use, the operator shall check the area in which the machine is to be used for possible hazards such as, but not limited to:

1. Bumps, floor obstructions and uneven surfaces
2. Overhead obstructions and electrical hazards
3. Presence of unauthorized persons
4. Other possible unsafe conditions as noted in the operating manual.

**Operator Warnings and Instructions** - The operator shall ensure the operation of the machine is in compliance with the following:

1. **Distribution of load** - The load and its distribution on the platform shall be in accordance with the manufacturer's rated capacity for that specific configuration.
2. **Maintaining overhead clearance** - The operator shall ensure that adequate clearance is maintained from overhead obstructions and energized electrical conductors and parts.
3. **Point of Operation** - The operator shall not place any part of their body under the platform.
4. **Precaution for moving equipment** - When other moving equipment or vehicles are present, special precautions shall be taken to comply with the safety standards established for the workplace.
5. **Reporting problems or malfunctions** - The operator shall immediately report to a supervisor any problem(s) or malfunction(s) that become evident during operation. The operator shall ensure all problems and malfunctions that affect the safety of operations are repaired prior to continued use.
6. **Capacity limitation** - Rated capacity shall not be exceeded when loads are transferred to the machine.
7. **Work area** - The operator shall ensure the area surrounding the machine is clear of personnel and equipment before lowering the load enclosure.
8. **Securing the machine** - The operator shall comply with the means and procedures provided to protect against use by an unauthorized person(s).
9. **Altering safety devices** - Safety devices shall not be altered or disabled.
10. **Modifications** or alterations of the machine or the fabrication and attaching of frameworks or the mounting of attachments to the machine or the guarding system shall only be accomplished with prior written permission of the manufacturer.
11. **Assistance to the operator** - If an operator encounters any suspected malfunction or any hazard or potentially unsafe condition relating to capacity, intended use or safe operation the operator shall cease operation of the machine and request further instruction from the owner/user.
12. **Problems or malfunctions** - Any problem(s) or malfunction(s) that affect the safety of operations shall be repaired prior to the use of the machine.

## 2. Safety

All personnel installing, operating, and maintaining this machine shall read and understand this manual. For questions or concerns contact the manufacturer.

This machine shall be installed, operated, and maintained by trained and/or qualified personnel only.

### 2.1 Safety Alert Symbols

A symbol that indicates a hazard. It is composed of an equilateral triangle surrounding an exclamation mark. The safety alert symbol is only used on hazard alerting signs. It is not used on safety notice and safety instructions signs.



**A** – For use with **DANGER** signal word; (safety white triangle, safety red exclamation mark, safety red background)

**B** – For use with **WARNING** signal word; (safety black triangle, safety orange exclamation mark)

**C** – For use with **CAUTION** signal word; (safety black triangle, safety yellow exclamation mark)

**D** – For use with **DANGER, WARNING, or CAUTION** signal words; (**D** is a safety yellow triangle with a safety black border and safety black exclamation mark);

### 2.2 Signal Words



**DANGER** Indicates a hazardous situation that, if not avoided, will result in death or serious injury.



**WARNING** Indicates a hazardous situation that, if not avoided, could result in death or serious injury.



**CAUTION** Indicates a hazardous situation that, if not avoided, could result in minor or moderate injury.

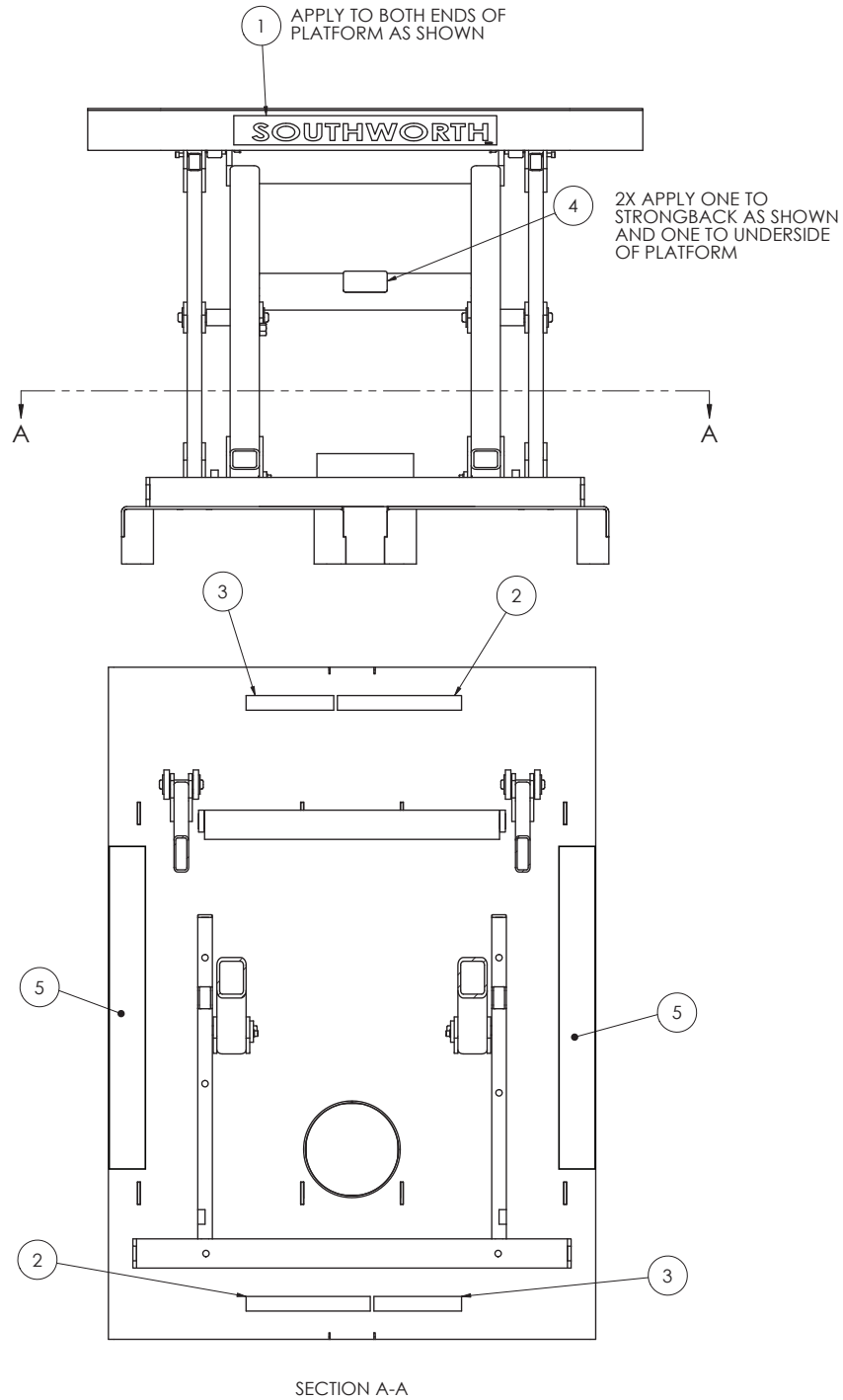


**NOTICE** Indicates information considered important, but not hazard-related (e.g., messages relating to property damage).

### 3. Labeling

This machine has labeling to indicate potential hazards this machine may pose when operating and/or maintaining the machine. All labels must be legible. If any label is missing, damaged, or otherwise illegible contact the manufacturer for replacement labels.

#### 3.1 Label Placement Diagram



|          |      |  |          |
|----------|------|--|----------|
| 5        | 5 FT | ANTI SKID TAPE                           | 10072618 |
| 4        | 2    | LD DCL 2.00X3.00 SOUTHWORTH SERIAL ID BL | 10079929 |
| 3        | 2    | LD DCL 1.00X6.00 A DANGER TO AVOID BODIL | 10089458 |
| 2        | 2    | LD DCL 1.00X8.50 TO AVOID BODILY INJURY, | 10089457 |
| 1        | 2    | BK-LD DCL 2.00X18.00 SOUTHWORTH          | 10041812 |
| ITEM NO. | QTY. | DESCRIPTION                              | PART NO. |



## 4. Setup

Remove all packaging. Inspect the machine for damage. Verify all components were received. If damage is found or components are missing do not continue the setup procedure; contact customer service.



**Do not sit stand or ride on the platform.**

**This machine is not designed to be lagged to the floor.**

Upon receipt of the Walkie there will be pins/bolts in the lower roller tracks to prevent the lift from collapsing during transit. Remove the pins/bolts and discard.

## 5. Operation



**Do not sit, stand, or ride on the platform.**

**Keep hands, feet, and loose clothing away from moving parts.**

**Do not push/roll a load off the edge of the platform. This may cause the machine to rebound quickly and could lead to injury or damage to the machine.**

**The platform should always be loaded and unloaded uniformly in even layers. Uneven loading can cause the load to become unstable and could lead to injury. Uneven loading can cause premature wear or damage to the machine.**

**Do not drop load onto the platform or the machine may be damaged.**

**Do not exceed the rated capacity.**

**Forks must be long enough to support the entire base of the Walkie.**

**Loads must not exceed 60 inches in height.**

**Lift weight without load: Approximately 360 lb.**

### 5.1 Application & Use

This is a level loader to aid in order picking individual cartons and other case goods. The platform supports a pallet or skid. The abrasive finish is to help retain the pallet or skid from sliding when then the pallet jack is being moved. As loads are set on the pallet the Walkie platform will lower which greatly reduces the need to bend or reach out from the body. Off-loading a pallet or skid must be done with a fork lift or stacker.

To use the lift, insert the forks into the fork pockets. The forks must be inserted as far under the lift as possible to ensure the lift is secure on the forks. Raise and lower the forks slowly and smoothly. Raising and lowering the forks quickly or suddenly could cause the lift to bounce and cause the load to become unstable.

### 5.2 Loading & Unloading

This lift is capable of accommodating all standard electric walkies and walkie riders. It can support all types and sizes of skids and pallets.

The lift is capable of supporting a 4,500 lb pallet load and provides automatic leveling of loads from 400 to 2,200 lb. and a maximum of 60 inches in height. The spring will be fully compressed with an approximately 875 lb load.

When manually loading and unloading, always add or remove product uniformly in even layers. As the pallet is loaded the platform will lower, maintaining the proper working height.

The platform includes inset relief along the sides for improved operator footing and to ease the loading and unloading process. The base frame includes non-skid surface in these areas.

## 6. Maintenance & Repair

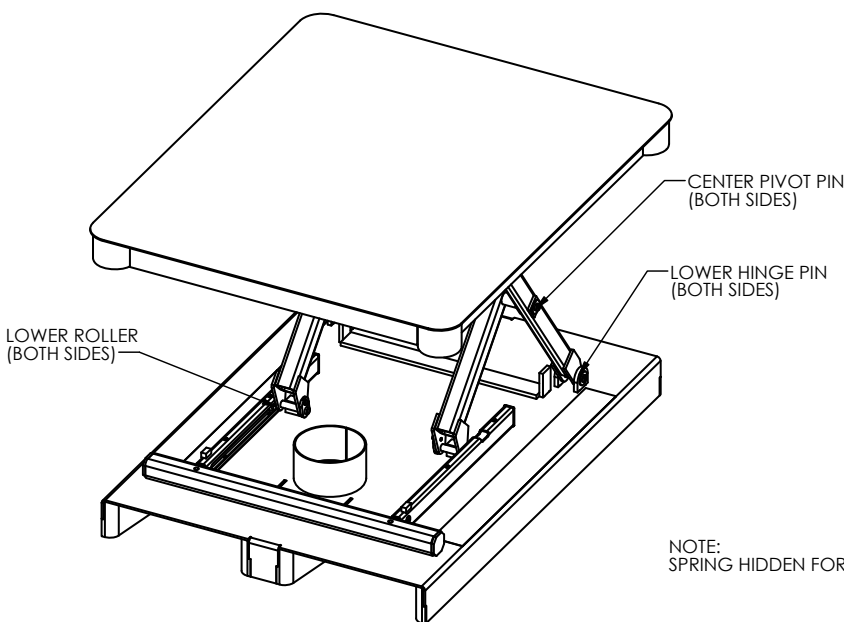
### 6.1 Periodic Maintenance

#### 6.1.1. Weekly

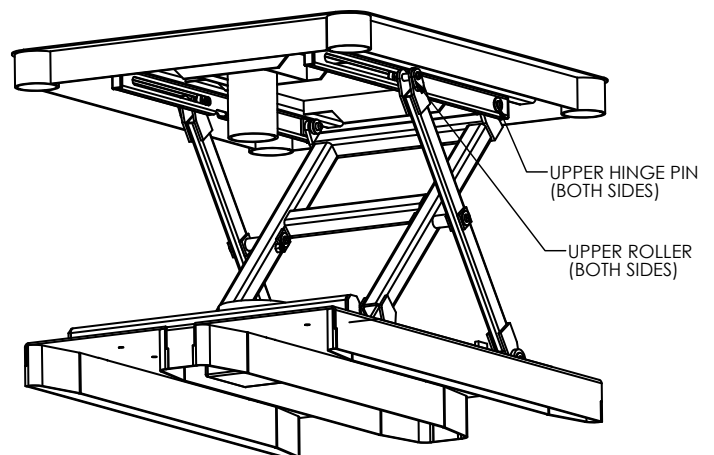
- Inspect precautionary labeling. If any label is damaged or otherwise illegible contact the manufacturer for replacement labels.
- Inspect the anti-skid tape on the base frame. Replace as necessary.
- Inspect upper and lower rollers, roller pins and bushings, and roller tracks. Replace as necessary.
- Inspect upper and lower hinge pins and bushings. Replace as necessary.
- Inspect center leg pins and bushings. Replace as necessary.
- Inspect base frame, platform, and leg set for wear or damage.
- Inspect the spring. The spring should be free of cracks and other damage. If the spring is damaged, immediately remove the lift from service until the spring is replaced. Spring

#### 6.1.2. Every Six Months

- Perform weekly maintenance
- Apply PTFE lubricant to all pivot points, rollers, and bearings.



NOTE:  
SPRING HIDDEN FOR CLARITY



## 7. Troubleshooting

| Problem   | Possible Cause   | Check This  |
|---|--|---|
| Lift does not lower when a load is placed on the platform | The load is not heavy enough to compress the spring.               | The Walkie is capable leveling loads from 400-2,200 lb.   |
|   | Mechanical binding   | Inspect the lift for damage or debris that may cause binding of the leg set and/or rollers.   |
| Lift does not raise when product is removed.              | The remaining load is too heavy to allow the spring to decompress. | The Walkie is capable leveling loads from 400-2,200 lb. The spring will be fully compressed with approximately 875 lb. on the platform. |
|   | Mechanical binding   | Inspect the lift for damage or debris that may cause binding of the leg set and/or rollers.   |

## 8. Warranty & Contact Information

Southworth Products Corp. warrants this product to be free from defects in material or workmanship for the duration of the warranty period. Warranty periods vary and begin on the date of shipment. For specific warranty information, contact Southworth Products with the machine's serial number.

Any claim for breach of this warranty must be received in writing by Southworth within the warranty period. Warranties shall not cover failure or defective operation, caused by misuse, misapplication, negligence or accident, exceeding recommended capacities, or any alteration or repair of the item purchased which has not been authorized by Southworth. Except as set forth herein, Southworth makes no other warranties, express or implied, including THE WARRANTIES OF MERCHANTABILITY AND OF FITNESS FOR A PARTICULAR PURPOSE, all of which ARE HEREBY EXCLUDED.

Southworth meets the labeling requirements of California's Proposition 65. Southworth makes no warranty or representation with respect to the compliance of any product with other State or local safety or product standard codes and any failure to comply with such codes shall not be considered a defect of material or workmanship under this warranty. Southworth shall not be liable for any direct or consequential damages arising out of such non-compliance.

Southworth's obligations under any warranty or for any other damages which may arise under any sale, agreement, or contract, are limited to the replacement or repair of defective components at its factory or another location at Southworth's discretion. This is buyer's sole remedy under any such warranty, sale, agreement, or contract. Southworth will not be liable for consequential, incidental, exemplary, or punitive damages of any kind resulting from a breach of any warranty that it has provided or for breach of any term of any sale, agreement, or contract. Any warranty may be altered only in writing by Southworth.

All commodities, software, or technology purchased from Southworth are subject to the export and re-export control laws and regulations of the United States, including but not limited to the Export Administration Regulations ("EAR") and Department of the Treasury Office of Foreign Asset Controls ("OFAC") Regulations. Southworth expects all distributors and customers to comply with these laws and regulations. Without limiting the foregoing, the distributor/customer cannot, without proper authorization from the applicable United States Government Agency, export, re-export, or transfer any commodity, software, or technology purchased from Southworth, either directly or indirectly, to any entity, country, or national of any country in breach of such laws and regulations. Furthermore, Southworth expects that the distributor/customer shall indemnify and hold harmless Southworth from and against any claim, proceeding, action, fine, loss, cost and damages arising out of or relating to any noncompliance with export control regulations by distributor/customer, and distributor/customer are expected to compensate Southworth for all losses and expenses resulting thereof, unless such noncompliance was clearly not caused by fault of the distributor/customer.

SOUTHWORTH PRODUCTS CORP.  
P.O. Box 1380, Portland, ME 04104-1380  
Telephone: 800-743-1000 • 207-878-0700  
Fax: 207-797-4734  
[www.SouthworthProducts.com](http://www.SouthworthProducts.com)

**SOUTHWORTH**