

Owner's Manual

Elevation Station

MODEL: ES .02-16



SOUTHWORTH
We'll Show You How

Southworth Products Corp
P.O. Box 1380, Portland, ME 04104-1380
Phone 800-743-1000 • FAX 207-797-4734

www.SouthworthProducts.com
service@SouthworthProducts.com

February 2009

INTRODUCTION

Southworth's Elevation Station has been designed to take the effort out of lifting and positioning. The Elevation Station conforms to ergonomic guidelines in order to make work as comfortable and safe as possible.

This manual contains information to acquaint you with the safe, proper use and upkeep of the Elevation Station. You should ensure that this manual is available to personnel working with the Elevation Station.

In the interest of safety please read the entire manual carefully and be familiar with its contents before you use or service the Elevation Station. If you have any questions about any instructions in this manual, please contact your dealer or Southworth Products Corporation.

The Elevation Station is fitted with a serial name plate located on the cover near the base of the actuator. The serial name plate is stamped with the model number, capacity and serial number; this information should be provided when making spare part inquiries or technical support.

Southworth's product warranty is shown on the back cover of this manual

SAFETY

The safety of all persons operating, maintaining, repairing, or in the vicinity of the Elevation Station is of paramount concern to Southworth. Therefore, throughout this manual, Southworth has identified certain hazards which may occur in the use of the Elevation Station and provided appropriate instructions or precautions which should be taken to avoid these hazards. In some cases, Southworth has also pointed out the consequences that may occur if these instructions or precautions are not followed. Southworth uses the following system of identifying the severity of the hazards associated with its products:

“DANGER”	Immediate hazard which will result in severe personal injury or death.
“WARNING”	Hazardous or unsafe practice which could result in severe personal injury or death.
“CAUTION”	Hazardous or unsafe practice which could result in minor personal injury or property damage.

Please read and follow the instructions in this manual, including all safety instructions and precautions, carefully and completely.

UNPACKING

Cut the banding straps and remove the Elevation Station from the shell crate, being careful not to scratch the unit. Remove the straps which are holding the platform insert in place.

SETUP

The unit should be set on a smooth flat floor. It does not need to be lagged down. Adjust the leveling feet to be sure all four corners are contacting the floor. The platform insert is reversible and can be lifted out and re-installed without tools.

TRANSIT DAMAGE

Inspect the Elevation Station for signs of damage in transit, paying particular attention to the electrical cabling. If there is evidence of damage, contact your Southworth dealer before using the Elevation Station.

HAZARDOUS ENVIRONMENTS

The Elevation Station's electrical equipment is not suitable for use in wet, flammable or explosive environments and must never be used when such hazards exist.

OPERATING

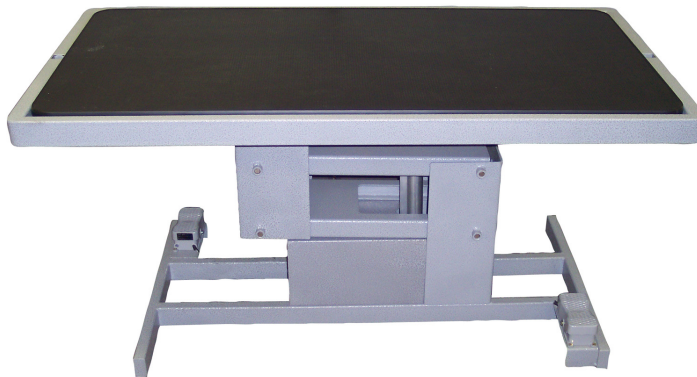
The position of the platform is controlled with either of the foot switches located on the base frame. The Elevation Station can be raised by pressing the UP button on the switch or lowered by pressing the DOWN button on the switch.

WARNING!

As the Elevation Station platform moves up and down, "pinch points" are created where the legs fold. When operating the Elevation Station, be careful to ensure that nobody becomes caught in the moving parts.

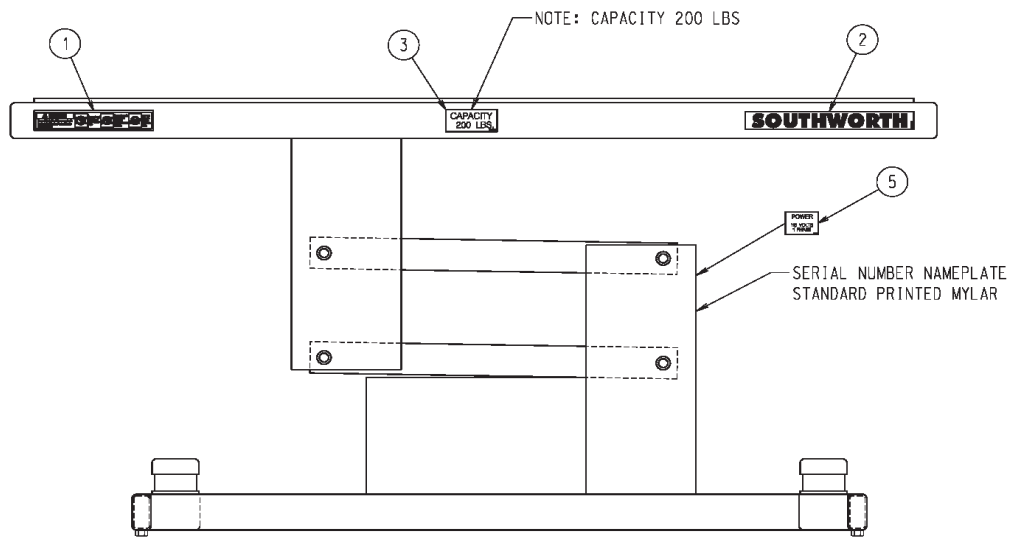
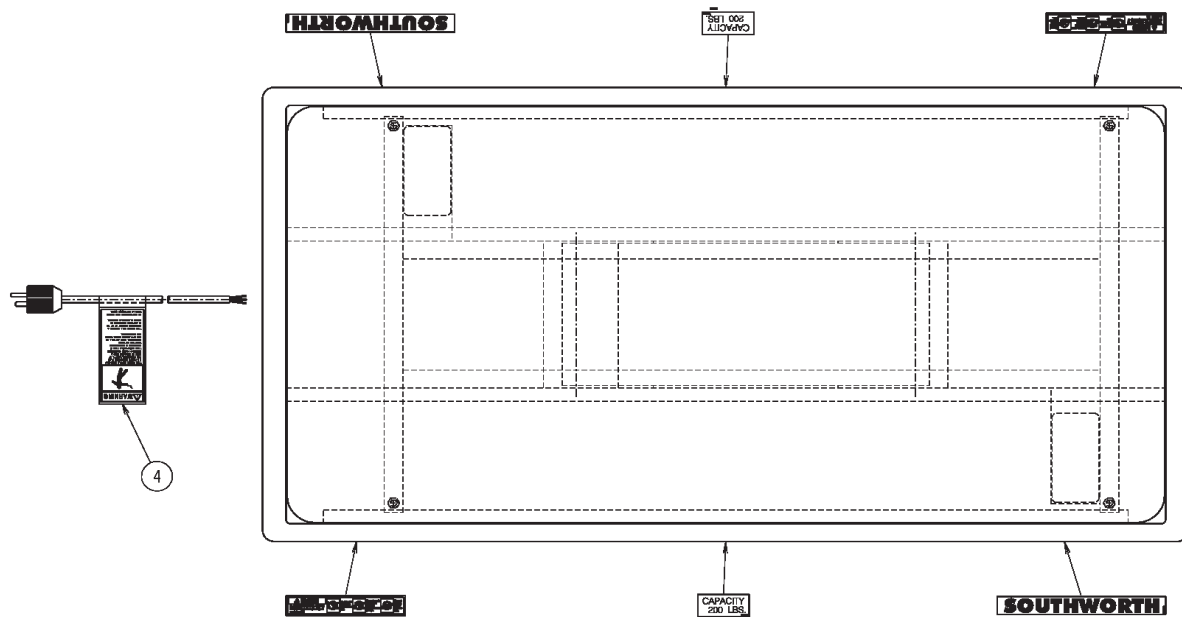
ACTUATOR

The Elevation Station's actuator is one of its best features. You can hardly tell it's running because of its low noise level that's below 50db. It has built-in end-stop switches for protection against dead heading or damaging the actuator. The operating mechanism is a simple screw jack that's driven by an internal DC motor.



SPECIFICATIONS

ELEVATION STATION	
Capacity (lifting)	200 lbs. uniformly distributed
Capacity (sustaining)	300 lbs. uniformly distributed
Platform Size	25-1/2" x 49-1/2"
Lowered Height	24"
Raised Height	40"
Vertical Travel	16"
Weight	180 lbs.
Rise Time/Lowering Time	25 seconds



LABELS AND PRECAUTIONARY MARKINGS

- #1 2998353 – TO AVOID BODILY INJURY
- #2 10021381 – SOUTHWORTH
- #4 5900159 – 200 lbs. Capacity
- #5 5904642 – WARNING (English & Spanish)
- #6 2987000 – Power
- #7 Serial Number Namplate

LOAD CAPACITY

The load capacity is stamped into the identification plate located on the central cross-member, at the base of the actuator and capacity stickers on either side of the table. The load capacity is based on the load applied centrally and uniformly to the platform.

CAUTION!

Do not overload the Elevation Station, as this may damage the unit.

CAUTION!

Do not let loads significantly overhang the platform, as this could result in the platform being overloaded, and cause the Elevation Station to tip over.

MAINTENANCE

The Elevation Station requires minimal maintenance.

Daily inspection: Make sure there are no foreign objects in the way of the folding scissor arms.

MONTHLY MAINTENANCE

- 1) Check all welds, making sure they are intact, no cracks or broken spots.
- 2) Check that the set screw on the actuator pivot bolts are in place.
- 4) Inspect the cable and plug for signs of damage.
- 5) Lubricate (WD-40) all pivot points.

TECHNICAL SUPPORT/ QUESTIONS

The Elevation Station should provide years of trouble-free service. However, in the event you experience difficulties with the Elevation Station.

Contact Southworth's Customer Service Dept. at 1-800-743-1000 or email service@SouthworthProducts.com.

Ordering Replacement Parts

Southworth has carefully chosen the components in your unit to be the best available for the purpose. Replacement parts should be identical to the original equipment. **Southworth will not be responsible for equipment failures resulting from the use of incorrect replacement parts or from unauthorized modifications to the machine.**

Southworth will gladly supply you with replacement parts for your Southworth lift. With your order, please include the model number and the serial number of the unit. You will find these numbers on the name plate.

To order replacement parts, please call the Parts Department at (207) 878-0700. Parts are shipped subject to the following terms:

- FOB factory.
- Returns only with the approval of our parts department.
- Payment net 30 days (except parts covered by warranty).
- Freight collect (except parts covered by warranty).

Parts replaced under warranty are on a "charge-credit" basis. We will invoice you when we ship the replacement part, then credit you when you return the assumed substandard part.

Parts Department
Southworth Products Corp
P.O. Box 1380, Portland, ME 04104-1380
Telephone: (207) 878-0700 FAX: (207) 797-4734
repairparts@SouthworthProducts.com

RETURN MATERIALS AUTHORIZATION (RMA) PROCEDURES

The Southworth Return Authorization (RMA) Procedure is provided as a courtesy to our customers in the event a product or a component may need to be returned.

If a customer wishes to return a Southworth product, the first step in the process is to request an RMA number from the Customer Service Department. This request must be made on or before the thirtieth (30th) calendar day following the date of Southworth's invoice for the merchandise being returned.

The RMA number must appear on the outside of any packaging material for a return to be accepted and processed at Southworth manufacturing facility. Customers shipping returns back to Southworth, from the continental US, Canada or Mexico have thirty (30) days from the effective date of the RMA to have the merchandise arrive freight prepaid at Southworth. If the RMA number is missing or expired (beyond 30 days) it may be refused at Southworth. If any RMA is expired, contact the Customer Service Department before returning to Southworth.

All RMA's are subject to the appropriate restocking fees. All credits issued are less restocking fees as applicable, plus any assessed outbound/inbound in-transit damages.

Return addresses: please refer to your RMA for the specific address to which your product should be returned. Southworth has multiple facilities and returning goods to other than the designated location will result in goods being refused.

Please contact the Customer Service Department at anytime regarding questions to this procedure.

Southworth Products Corp
P.O. Box 1380, Portland, Maine 04104
PH: 1-800-743-1000 or 1-207-878-0700 FAX: 207-797-4734
www.SouthworthProducts.com

2 YEAR WARRANTY

Southworth Products Corp warrants this product to be free from defects in material or workmanship for a period of **2 years** of single shift usage from date of shipment, providing claim is made in writing within that time period. This warranty shall not cover modified designs for special applications, failure or defective operation caused by misuse, misapplication, negligence or accident, exceeding recommended capacities, failure to perform required maintenance or altering or repairing, unless alteration is authorized by Southworth Products Corp. Except as set forth herein, there are no other warranties, express or implied, including the warranties of merchantability and fitness for a particular purpose, all of which are hereby excluded.

Southworth Products Corp makes no warranty or representation with respect to the compliance of any product with state or local safety or product standard codes, and any failure to comply with such codes shall not be considered a defect of material or workmanship under this warranty. Southworth Products Corp shall not be liable for any direct or consequential damages arising out of such noncompliance.

Southworth Products Corp's obligation under this warranty is limited to the replacement or repair of defective components at its factory or another location at Southworth Products Corp's discretion. This is buyer's sole remedy. Except as stated herein, Southworth Products Corp will not be liable for any loss, injury or damage to persons or property, nor for direct, indirect, or consequential damage of any kind, resulting from failure or defective operation of said product.

This warranty may be altered only in writing by Southworth Products Corp, Portland, Maine.

SOUTHWORTH
We'll Show You How

SOUTHWORTH PRODUCTS CORP
P.O. Box 1380, Portland, ME 04104-1380
Telephone: (800) 743-1000 • (207) 878-0700
Fax: (207) 797-4734
www.SouthworthProducts.com